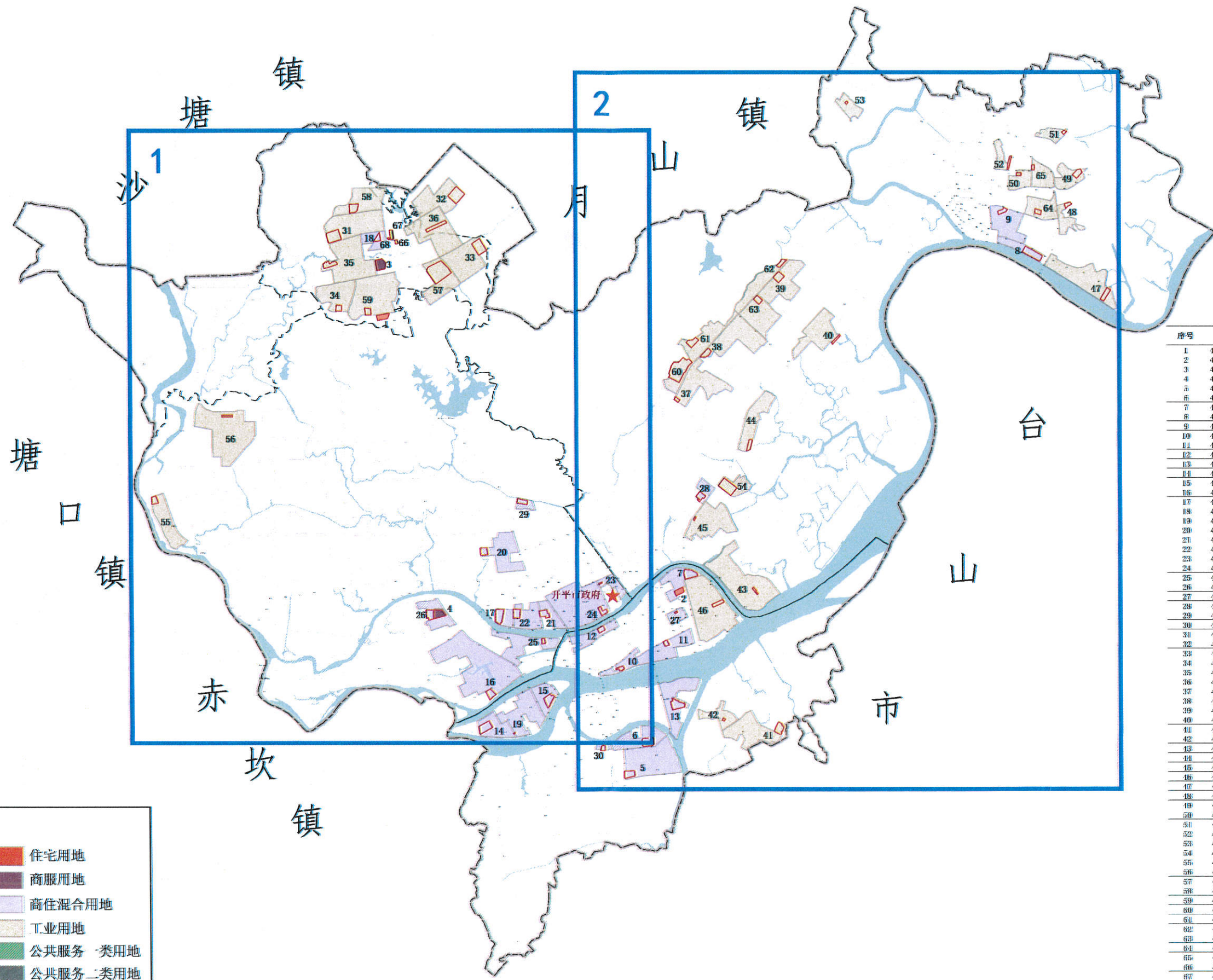
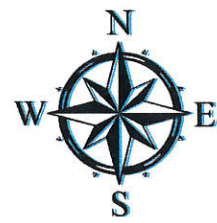
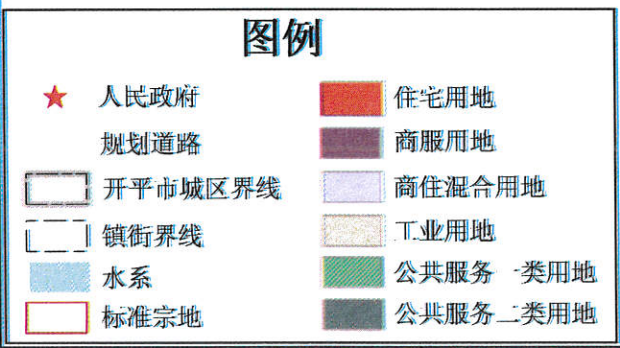


开平市城镇国有建设用地标定地价评估服务项目（总图）

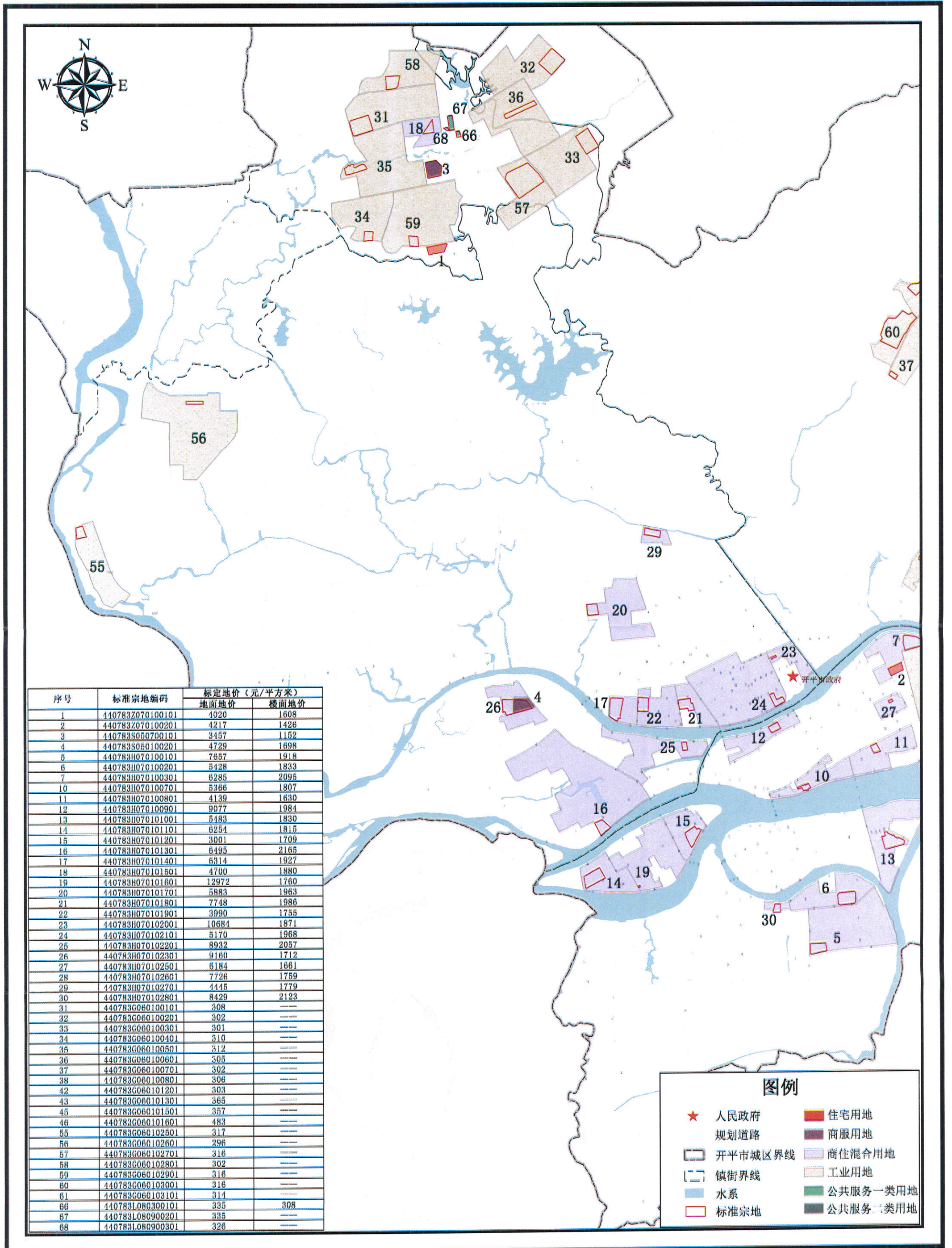


序号	标准宗地编码	标定地价 (元/平方米)	楼面地价
1	4407832070100101	4020	1608
2	4407832070100201	4217	1426
3	4407832050700101	3457	1152
4	4407832050100201	4729	1698
5	4407831070100101	7657	1918
6	4407831070100201	5428	1833
7	4407831070100301	6256	2096
8	4407831070100401	4985	1646
9	4407831070100501	5618	1681
10	4407831070100701	5366	1807
11	4407831070100801	4139	1630
12	4407831070100901	9077	1981
13	4407831070101001	5483	1830
14	4407831070101101	6254	1815
15	4407831070101201	3004	1709
16	4407831070101301	6495	2165
17	4407831070101401	6311	1927
18	4407831070101501	4700	1880
19	4407831070101601	12972	1760
20	4407831070101701	5883	1963
21	4407831070101801	7748	1986
22	4407831070101901	3990	1755
23	4407831070102001	10684	1871
24	4407831070102101	5170	1988
25	4407831070102201	8932	2057
26	4407831070102301	9150	1712
27	4407831070102501	6154	1664
28	4407831070102601	7726	1759
29	4407831070102701	4115	1779
30	4407831070102801	8129	2129
31	440783060100101	308	---
32	440783060100201	302	---
33	440783060100301	310	---
34	440783060100401	310	---
35	440783060100501	312	---
36	440783060100601	305	---
37	440783060100701	302	---
38	440783060100801	306	---
39	440783060100901	307	---
40	440783060101001	312	---
41	440783060101101	298	---
42	440783060101201	303	---
43	440783060101301	365	---
44	440783060101401	312	---
45	440783060101501	357	---
46	440783060101601	483	---
47	440783060101701	319	---
48	440783060101801	316	---
49	440783060101901	315	---
50	440783060102001	316	---
51	440783060102101	311	---
52	440783060102201	311	---
53	440783060102301	304	---
54	440783060102401	381	---
55	440783060102501	317	---
56	440783060102601	296	---
57	440783060102701	316	---
58	440783060102801	302	---
59	440783060102901	316	---
60	440783060103001	316	---
61	440783060103101	311	---
62	440783060103201	318	---
63	440783060103301	312	---
64	440783060103401	325	---
65	440783060103501	317	---
66	4407831080900101	335	388
67	4407831080900201	335	---
68	4407831080900301	326	---



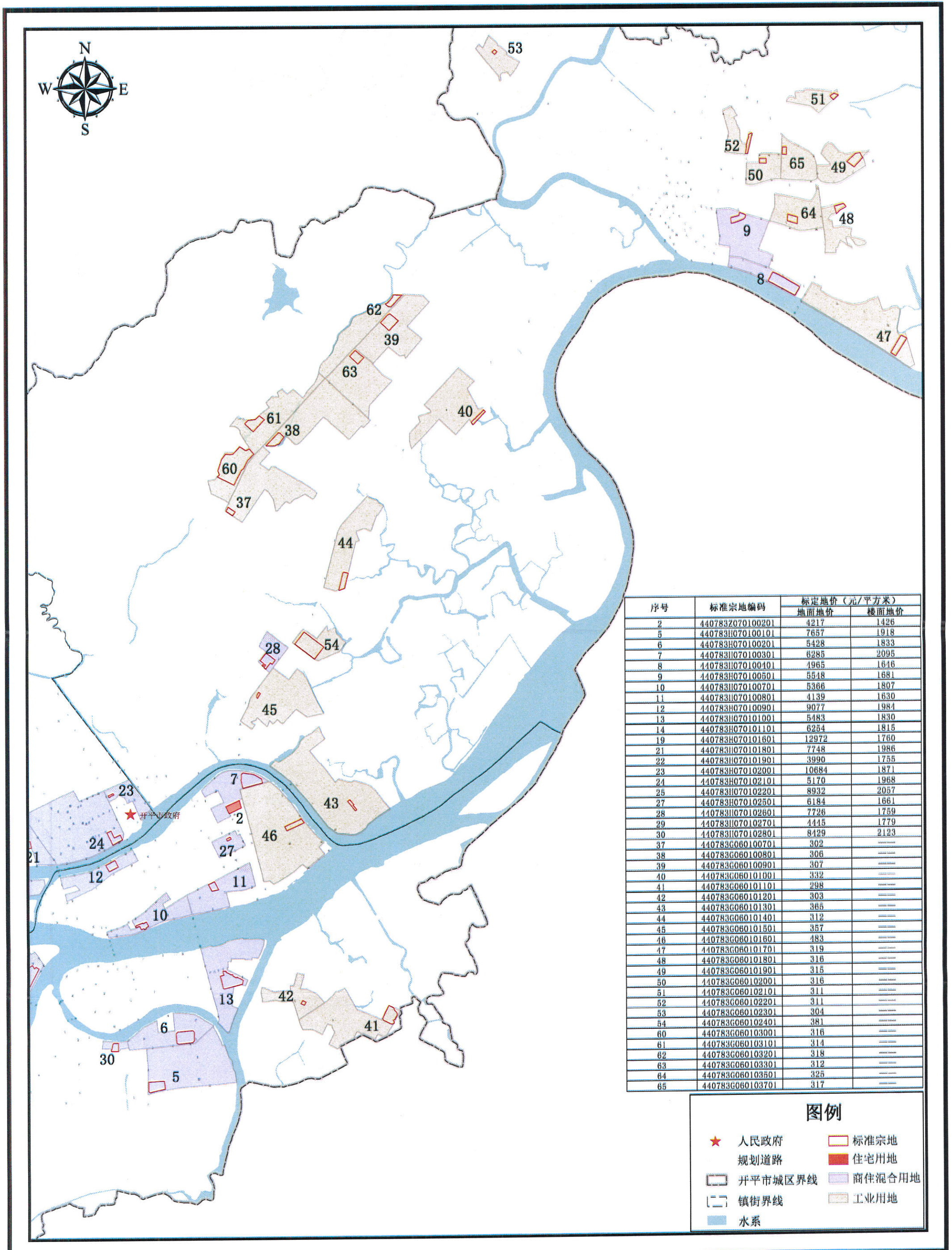
制图单位：开平市自然资源局
 广东中地土地房地产评估与规划设计有限公司
 制图日期：2020年8月

开平市城镇国有建设用地标定地价评估服务项目（图幅一）



制图单位：开平市自然资源局
 广东中地土地房地产评估与规划设计有限公司
 制图日期：2020年8月

开平市城镇国有建设用地标定地价评估服务项目（图幅二）



序号	标准宗地编码	标定地价 (元/平方米)	
		地面地价	楼面地价
2	440783Z070100201	4217	1426
5	440783H070100101	7657	1918
6	440783H070100201	5428	1833
7	440783H070100301	6285	2095
8	440783H070100401	4965	1646
9	440783H070100501	5548	1681
10	440783H070100701	5366	1807
11	440783H070100801	4139	1630
12	440783H070100901	9077	1984
13	440783H070101001	5483	1830
14	440783H070101101	6254	1815
19	440783H070101601	12972	1760
21	440783H070101801	7748	1986
22	440783H070101901	3990	1755
23	440783H070102001	10684	1871
24	440783H070102101	5170	1968
25	440783H070102201	8932	2057
27	440783H070102501	6184	1661
28	440783H070102601	7726	1759
29	440783H070102701	4445	1779
30	440783H070102801	8429	2123
37	440783G060100701	302	---
38	440783G060100801	306	---
39	440783G060100901	307	---
40	440783G060101001	332	---
41	440783G060101101	298	---
42	440783G060101201	303	---
43	440783G060101301	365	---
44	440783G060101401	312	---
45	440783G060101501	357	---
46	440783G060101601	483	---
47	440783G060101701	319	---
48	440783G060101801	316	---
49	440783G060101901	315	---
50	440783G060102001	316	---
51	440783G060102101	311	---
52	440783G060102201	311	---
53	440783G060102301	304	---
54	440783G060102401	381	---
60	440783G060103001	316	---
61	440783G060103101	314	---
62	440783G060103201	318	---
63	440783G060103301	312	---
64	440783G060103501	325	---
65	440783G060103701	317	---

图例

- ★ 人民政府
- 标准宗地
- 规划道路
- 住宅用地
- 开平市城区界线
- 商住混合用地
- 镇街界线
- 工业用地
- 水系

0 0.5 1 2 千米

制图单位：开平市自然资源局
 广东中地土地房地产评估与规划设计有限公司
 制图日期：2020年8月